

ImageDecoder

REVOLUTIONARY DVD & CD
TECHNOLOGY MADE SIMPLE

ImageDecoder provides real-time analysis of EFM output signals

Data Integrity

Mastering and replication resources are valuable, so early detection and prevention of errors is a high priority. The ImageDecoder is an instrumental tool for ensuring the integrity of EFM signals. When connected to an LBR, or other EFM source device, the ImageDecoder decodes and analyzes the output signal making certain it meets Book and format specifications. This real-time analysis ensures that any format error occurring in the EFM signal being written to the glass master or read from a stamper or replica is immediately detected and reported.

Hands-Free Operation

Automation is a key to improving productivity. The ImageDecoder has been automated to minimize operator intervention. The operator no longer needs to start and stop each job, AutoDetect performs the function automatically. AutoDetect senses the presence of a valid EFM signal and configures the decoder speed accordingly, all without operator intervention.

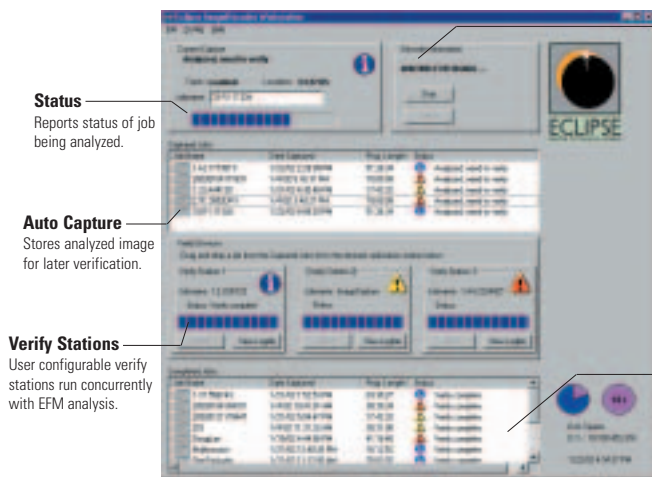
Proven Technology

The ImageDecoder is based on Eclipse's proprietary analysis engine. It provides real-time analysis of the decoded EFM signal using its database of more than 500 user-selectable rules. Analyzed images are temporarily stored and can be compared to the original source using the built-in ImageVerify function.

Improved Productivity

The ImageDecoder is a powerful, multi-tasking system capable of comparing up to three captured images to their sources, while concurrently decoding and analyzing another EFM signal. ImageDecoder allows you to easily detect format errors early in your process preventing costly rework.

REVOLUTIONARY DVD & CD TECHNOLOGY MADE SIMPLE



Status
Reports status of job being analyzed.

Auto Capture
Stores analyzed image for later verification.

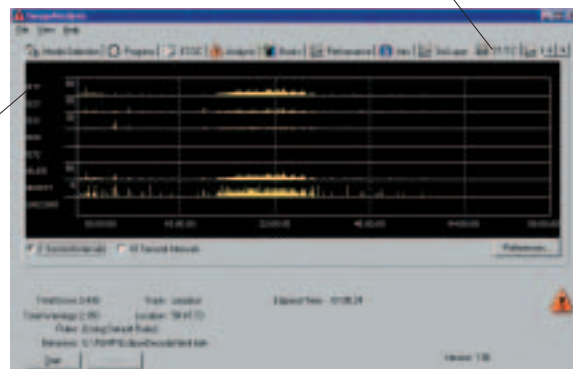
Verify Stations
User configurable verify stations run concurrently with EFM analysis.

Auto Detect
Automatically detects when the EFM signal starts.

Error Activity
Reports type, location, and number of errors.

Completed Job Queue
Displays verification data results and provides access to log files.

Error Tab
Tracks and displays error information.



Benefits Summary

- Find critical format errors early in the process
- Eliminate the need for test molds or first article samples
- Early bit-to-bit verification to the source master
- Provides real-time format analysis of the EFM signal
- Better utilization of resources, saving time and money

Features Summary

- Uses Eclipse's industry standard analysis engine
- Includes ImageVerify software
- Automatically starts when valid EFM signal is detected
- Automatically configures decoder speed
- AutoCapture stores analyzed images for later verification
- Verifies three images while simultaneously analyzing an EFM signal

Supported Formats

- Red Book (CD Audio)
- Yellow Book (CD-ROM)
- Mixed Mode
- Yellow Book Addendum (CD-XA)
- Orange Book (CD Recordable)
- Multi-session
- Blue Book (CD-Extra)
- Green Book (CD-I)
- CD-I Ready
- White Book (Video CD)
- Disk At Once (DAO)
- Track At Once (TAO)
- Track Incremental
- CD Text

Test Features

Expert-level CD Analysis and Reporting

- More than 500 user-selectable Rules and Behaviors
- Main and subchannel compliance
- DDP file set validation
- TOC validation to subchannel
- Validation of Gapping Rules
- File system information (ISO 9660, HFS, Rockridge, Joliet, UDF)

AutoDetect

- Automatic start and stop
- Automatic speed configuration

Detailed Log File Generation

Advanced Verification Capability

- Bit-to-bit main and subchannel verification
- Comparison of TOCs, ISRCs, UPCs

Performance and error information reported:

- 3rd layer error correction
- 1st and 2nd layer error correction (E11, E21, E31, E22 and E32)
- BLER and burst
- RW subcode errors
- Digital Sum Value (DSV) performance data

