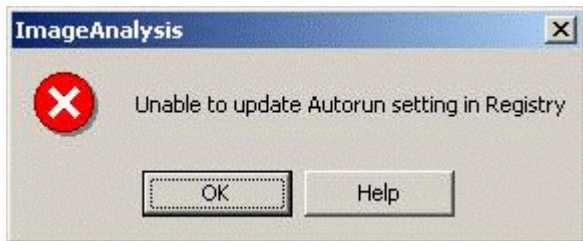


## Why do I get an "Unable to update Autorun setting in Registry" error message?

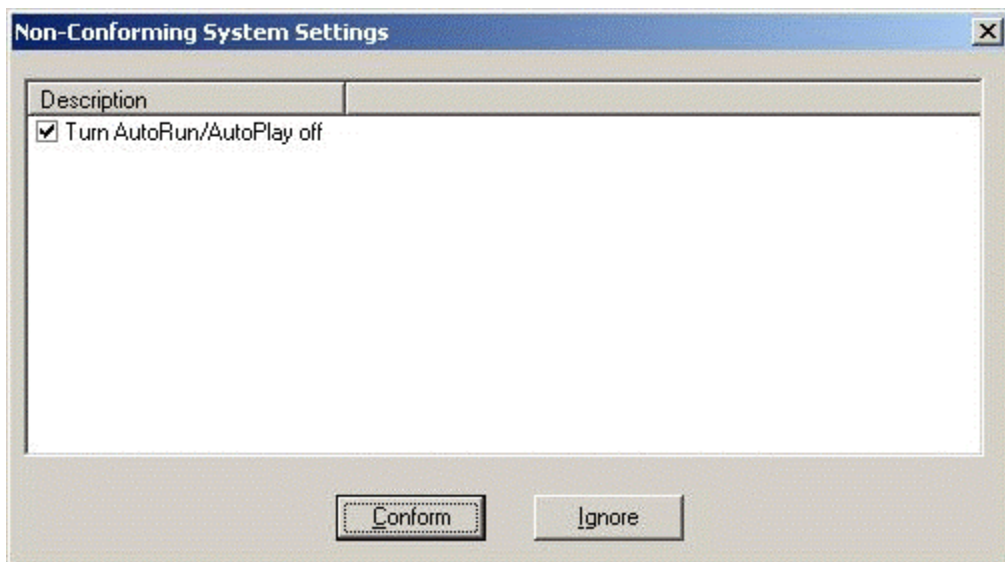
**Versions Affected:** *All Eclipse applications* on all operating systems.

**Issue:** Unable to conform system settings when logged in to an account without administrator privileges.

**Problem Description:** After installation, the Eclipse software attempts to modify the registry to optimize performance. If the current user does not have administrator privileges, then the registry cannot be updated causing the following error screen to be displayed each time an application is launched.



**Solution:** Log in to an account with administrator rights and open the "users and Passwords" control panel. Temporarily grant the user account full administration privileges. Log off as administrator and log back on as the user. Launch the Eclipse applications and select conform when prompted with the following dialog box.



Once the registry has been modified to conform to the desired Eclipse settings, it is safe to remove administrator rights from the user account. This can be done using the "Users and Passwords" control panel when logged in as administrator. The system settings will then be set to use with the Eclipse software and the user account will have restricted rights.